



Sydney Orthodontists

Chatswood

Suite 402,
71 Archer Street
Chatswood NSW 2067
Tel: (02) 9415 1221
email: topbraces@yahoo.com

Mosman

Level 2,
393 Military Road
Mosman NSW 2088
Fax: (02) 9969 1454
web: www.sydneybraces.com

Dr James K.W. Choi

SPECIALIST ORTHODONTIST

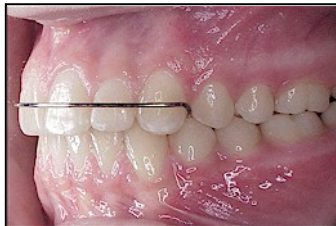
BDS Hons (Syd), BScDent Hons (Syd), MDSc (Orthodontics)(Syd), PhD (Syd)

PHASE 1 RETAINERS

1. After Phase 1 treatment, all patients must wear retainers.
 - a. For the upper, a plate retainer is used which is made of hard plastic.
 - b. Retainers are worn night time for approx. one year.

2. Will my teeth move back after treatment?
 - a. YES.
 - b. That is why you **must** wear your retainers **every night** for approx 1 year.
 - c. If you do not wear your retainers and teeth move (retainer does not fit) or retainer is lost, then a replacement retainer is required.
 - d. Replacement cost of \$300.

Please call & advise reception immediately if you have any problems with retainers.



Example of Plate Retainer



Certified Member
Australian Orthodontic Board

American Association of
Orthodontists



Member
American Association of Orthodontists



Member
World Federation of Orthodontists



Member
Australian Society of Orthodontics